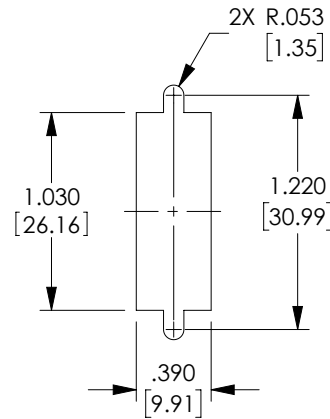
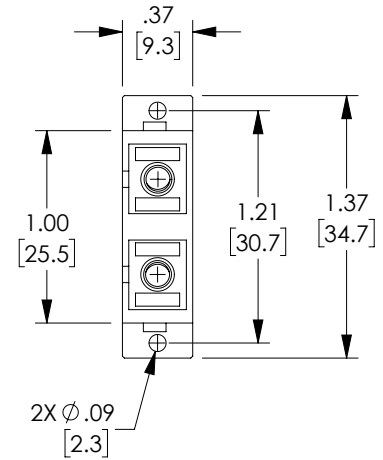
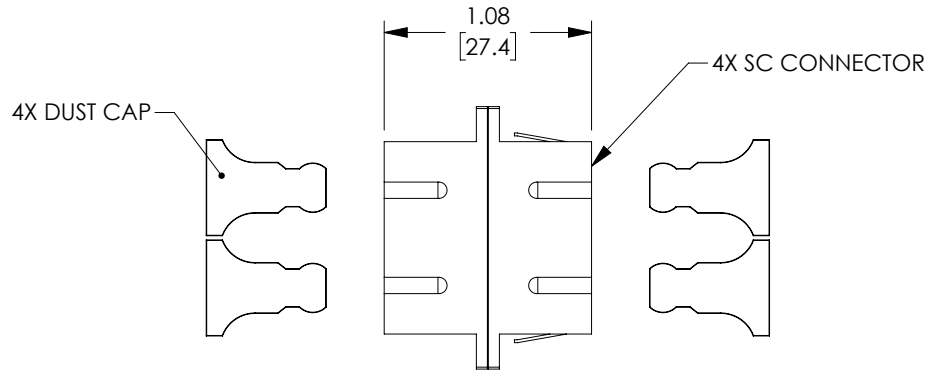


THE INFORMATION CONTAINED IN THIS DRAWING IS THE SOLE PROPERTY OF POLYPHASER, INC. ANY REPRODUCTION IN PART OR WHOLE WITHOUT THE WRITTEN PERMISSION OF POLYPHASER, INC. IS PROHIBITED.

REVISIONS			
REV	DESCRIPTION	DATE	APPROVED
A	INITIAL RELEASE	06/01/21	PHOSPODAR



RECOMMENDED PANEL CUTOUT

NOTES:

MATERIALS:
 SLEEVE: BRONZE
 BODY: ABS THERMOPLASTIC, BLACK
 DUST CAP: ENGINEERING PLASTIC, BLACK
 MOUNTING CLIPS: STAINLESS STEEL


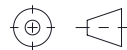
RECOMMENDED PANEL THICKNESS: .06" [1.5]

ALL DIMENSIONS ARE FOR REFERENCE ONLY.

COMPONENT SHALL BE INDIVIDUALLY PACKAGED IN ACCORDANCE WITH L-COM SPECIFICATION PS-0031.

REGULATORY COMPLIANCE:

EU RoHS DIRECTIVE (MOST RECENT RELEASED VERSION)

UNLESS OTHERWISE SPECIFIED, DIMENSIONS ARE IN INCHES [mm] OVERALL CABLE LENGTH TOLERANCE: ≤12 [305] = +1 [25] / -0 >12 [305] ≤60 [1524] = +2 [51] / -0 >60 [1524] ≤120 [3048] = +4 [102] / -0 >120 [3048] ≤300 [7620] = +6 [152] / -0 >300 [7620] = +5% / -0 ALL OTHER DIMENSIONAL TOLERANCES: .X = ± .2 [5] FRACTIONS ± 1/32 .XX = ± .02 [5] ANGLES ± 1° .XXX = ± .005 [13]	APPROVALS	DATE	 an INFINITO brand 10701 Airport Road, Hayden, ID 83835 Phone: 1.208.635.6400 Fax: 1.208.955.2041		
	DRAWN BY DMAY	05/28/21			CATEGORY FIBER OPTICS
	CHECKED BY PHOSPODAR	06/01/21			
	APPROVED BY PHOSPODAR	06/01/21	PRODUCT DESCRIPTION SC Duplex Multimode Coupler, Flange, Black		
THIRD-ANGLE PROJECTION 	COLOR VARIATIONS MAY OCCUR	SIZE A	CAGE CODE 30992	ITEM NO. OFC-SCSC-E-1B0PBK0	REV. A
SCALE: NONE		CAD FILE: OFC-SCSC-E-1B0PBK0.SLDDRW		SHEET 1 OF 1	