

Passive CWDM, Single LGX Mux/Demux, 8 Ch. w/20nm spacing, start ch 1470nm, LC/UPC w/PASS & MON (1%)



PCWDM-LGXMDM-82047

Features

- Passive
- CWDM
- 20nm spacing
- Standard LGX cassette
- Two Fiber Mux & Demux Combo
- 8 Channels
- Starting with channel 1471nm
- LC/UPC connectors
- 1% Monitor option
- Pass /Express option

Applications

- Single Mode Fiber Networking
- Dual Fiber
- side by side mux and demux functions
- Metro transport
- Regional Distribution
- Inside Plant (ISP) Operation

Description

The PolyPhaser PCWDM-LGXMDM-82047 is a CWDM Passive Filter with 8 CWDM Channels. The PolyPhaser PCWDM-LGXMDM-82047 is a single HU LGX cassette filter with Combo Mux and DeMux functionality. The PolyPhaser PCWDM-LGXMDM-82047 has 8 channels: 1471, 1491, 1511, 1531, 1551, 1571, 1591, and 1611nm, starting with 1471nm and with 20nm spacing. The PolyPhaser PCWDM-LGXMDM-82047 has LC/UPC connectors and has Monitor port option on Mux and Demux and a PASS port to carry the unused CWDM channels through. The PolyPhaser PCWDM-LGXMDM-82047 is a dual fiber filter with one sending muxed signal and the other receiving a composite signal for demuxing. PolyPhaser produces the high quality passive filters that your business can rely on. With products continually in stock and same-day shipping, our expert technical support and knowledgeable sales team can get you to the right parts for the job.

Configuration

Connector Type	LC/UPC
Number of Channels	8
Module Function	Mux/DeMux
Filter Type	CWDM

Filter Specifications

Description	Minimum	Typical	Maximum	Units
Operating Wavelength	1260		1635	nm
Pass Port Wavelength	1,271		1,611	nm
Pass Port Insertion Loss			2.8	dB
Pass Port Isolation	12			dB
Pass Band	6.5			nm
Pass Band Ripple			0.5	dB
Center Wavelength (Channel)	1,471		1,611	nm
Channel Spacing		20		nm
Channel Insertion Loss			3	dB
Return Loss	45			dB
Directivity			50	dB

Click the following link (or enter part number in "SEARCH" on website) to obtain additional part information including price, inventory and certifications:
[Passive CWDM, Single LGX Mux/Demux, 8 Ch. w/20nm spacing, start ch 1470nm, LC/UPC w/PASS & MON \(1%\) PCWDM-LGXMDM-82047](#)

Passive CWDM, Single LGX Mux/Demux, 8 Ch. w/20nm spacing, start ch 1470nm, LC/UPC w/PASS & MON (1%)



PCWDM-LGXMDM-82047

PDL	0.25	dB
PMD	0.2	PS
Power Handling	300	mW
Channel to Monitor Port IL	25	dB
COM to Monitor Port IL	23	dB
IL Thermal Stability	0.005	dB/degC
Wavelength Thermal Stability	0.002	nm/degC

Weight 0.7 lbs [317.51 g]

Environmental Specifications

Temperature

Operating Range -20 to +65 deg C
Storage Range -40 to +85 deg C

Humidity 5-98 %RH

Compliance Certifications (see [product page](#) for current document)

Plotted and Other Data

Notes:

PolyPhaser protects and increases the reliability of global RF communications networks, including transportation, telecommunications, defense, security and industrial applications, with superior RF surge protection technologies including DC Block, DC Pass and Ultra Low PIM. Backed by responsive service and expert technical support PolyPhaser continually expands its product offering and services to serve engineers' urgent needs for RF components in mission critical communication networks.

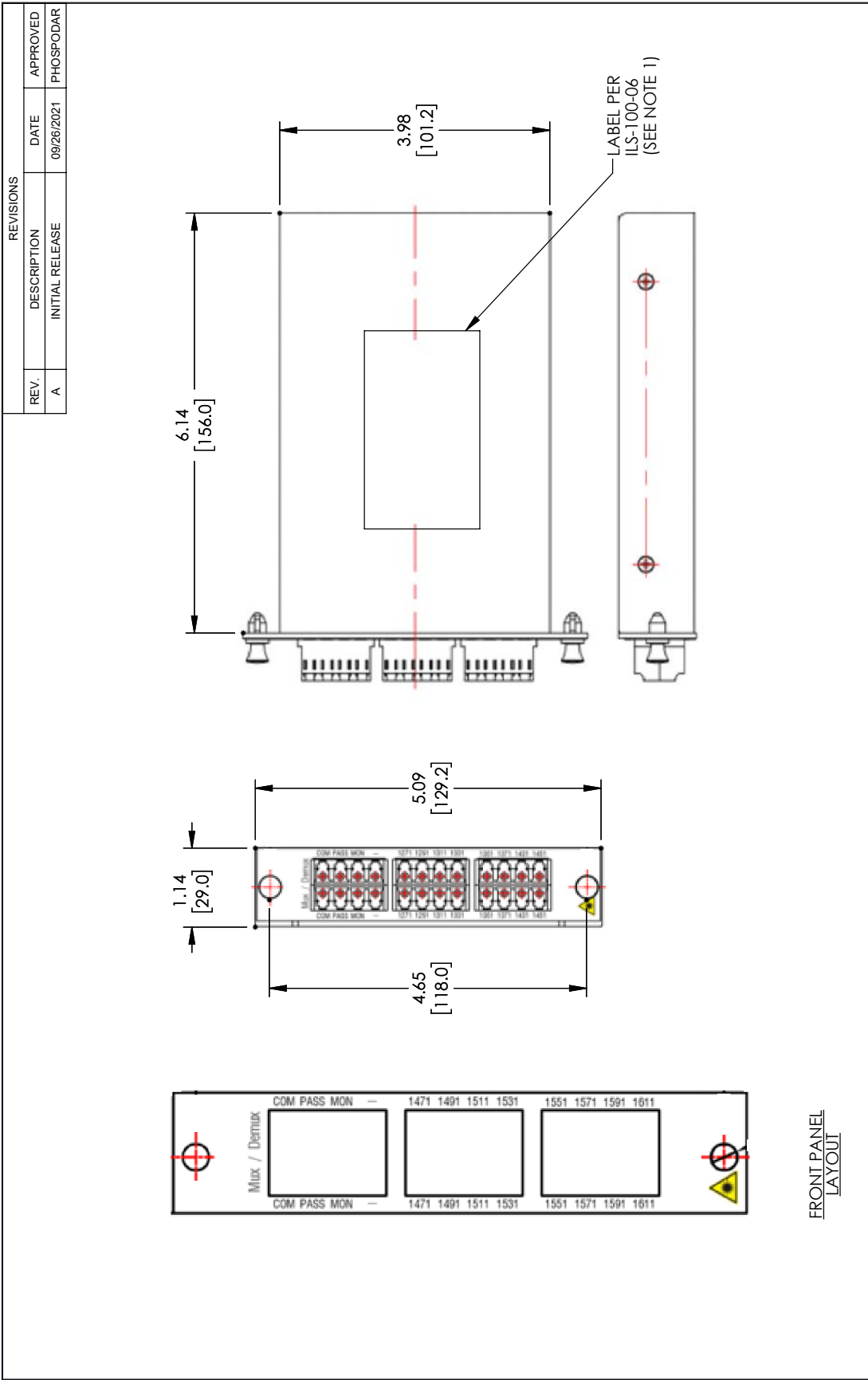
Click the following link (or enter part number in "SEARCH" on website) to obtain additional part information including price, inventory and certifications: [Passive CWDM, Single LGX Mux/Demux, 8 Ch. w/20nm spacing, start ch 1470nm, LC/UPC w/PASS & MON \(1%\) PCWDM-LGXMDM-82047](#)

URL: <https://www.polyphaser.com/passive-cwdm-single-lgx-mux-demux-8-ch-w-20nm-spacing-start-ch-1470nm-lc-upc-w-passmon-1-pcwdm-lgxmdm-82047-p.aspx>

The information contained in this document is accurate to the best of our knowledge and representative of the part described herein. It may be necessary to make modifications to the part and/or the documentation of the part, in order to implement improvements. PolyPhaser reserves the right to make such changes as required. Unless otherwise stated, all specifications are nominal. PolyPhaser does not make any representation or warranty regarding the suitability of the part described herein for any particular purpose, and PolyPhaser does not assume any liability arising out of the use of any part or documentation.

Passive CWDM, Single LGX Mux/Demux, 8 Ch. w/20nm spacing,
start ch 1470nm, LC/UPC w/PASS & MON (1%)

PCWDM-LGXMDM-82047 CAD Drawing



FRONT PANEL LAYOUT

NOTES:

1. LABEL PER ILS-100-06 (FOR INTERNAL REFERENCE ONLY)
LABEL LOCATION FOR REFERENCE ONLY.

THESE COMMODITIES, TECHNOLOGY OR SOFTWARE WERE EXPORTED FROM THE UNITED STATES IN ACCORDANCE WITH THE EXPORT ADMINISTRATION REGULATIONS. DIVERSION CONTRARY TO U.S. LAW PROHIBITED.

<p>PolyPhaser an INFINITE brand</p> <p>10701 Airport Road, Hayden, Idaho 83835, USA Phone: 1.208.635.6400 1.800.882.9110 Fax: 1.208.762.6133 Website: www.PolyPhaser.com E-mail: CustomerService@PolyPhaser.com</p>		<p>THIRD-ANGLE PROJECTION</p> <p>THE INFORMATION AND DESIGN IN THIS DOCUMENT IS THE PROPERTY OF ALL RIGHTS RESERVED.</p> <p>SHEET 1 OF 1</p> <p>SCALE N/A</p>
<p>UNLESS OTHERWISE SPECIFIED LEADING DIMENSIONS ARE INCHES DIMENSIONS IN [] ARE MILLIMETERS</p> <p>TOLERANCES:</p> <p>X = +2 [5.08] FRACTIONS +1/32</p> <p>.XX = +0.02 [51] ANGLES ±1°</p> <p>.XXX = +0.005 [13] CABLE LENGTH (L) TOLERANCES:</p> <p>L ≤ 12 [305] = ±1 [25] / -0</p> <p>12 [305] < L ≤ 60 [1524] = ±2 [51] / -0</p> <p>60 [1524] < L ≤ 120 [3048] = ±4 [102] / -0</p> <p>120 [3048] < L ≤ 300 [7620] = ±6 [152] / -0</p> <p>300 [7620] < L = +6%L / -0</p>	<p>SIZE CAGE CODE DRAWN BY ITEM NO.</p> <p>A 30992 MVEERAPPAN PCWDM-LGXMDM-82047</p>	<p>REV A</p>